

*Lancaster County Conservation District's
Watershed Excellence Award*

**Millcreek Preservation
Association**

Forming a Watershed Organization



April 9, 2003

- Department of Environmental Protection (3)
- PA Fish & Boat Commission (2)
- Lancaster Co. Conservation District (3)
- Non-Profit Organizations (2)
- Army Corps of Engineers
- NRCS
- Municipality
- Private Consultant
- **Property Owners/Farmers (12)**

Esh Dam Removal Project













History

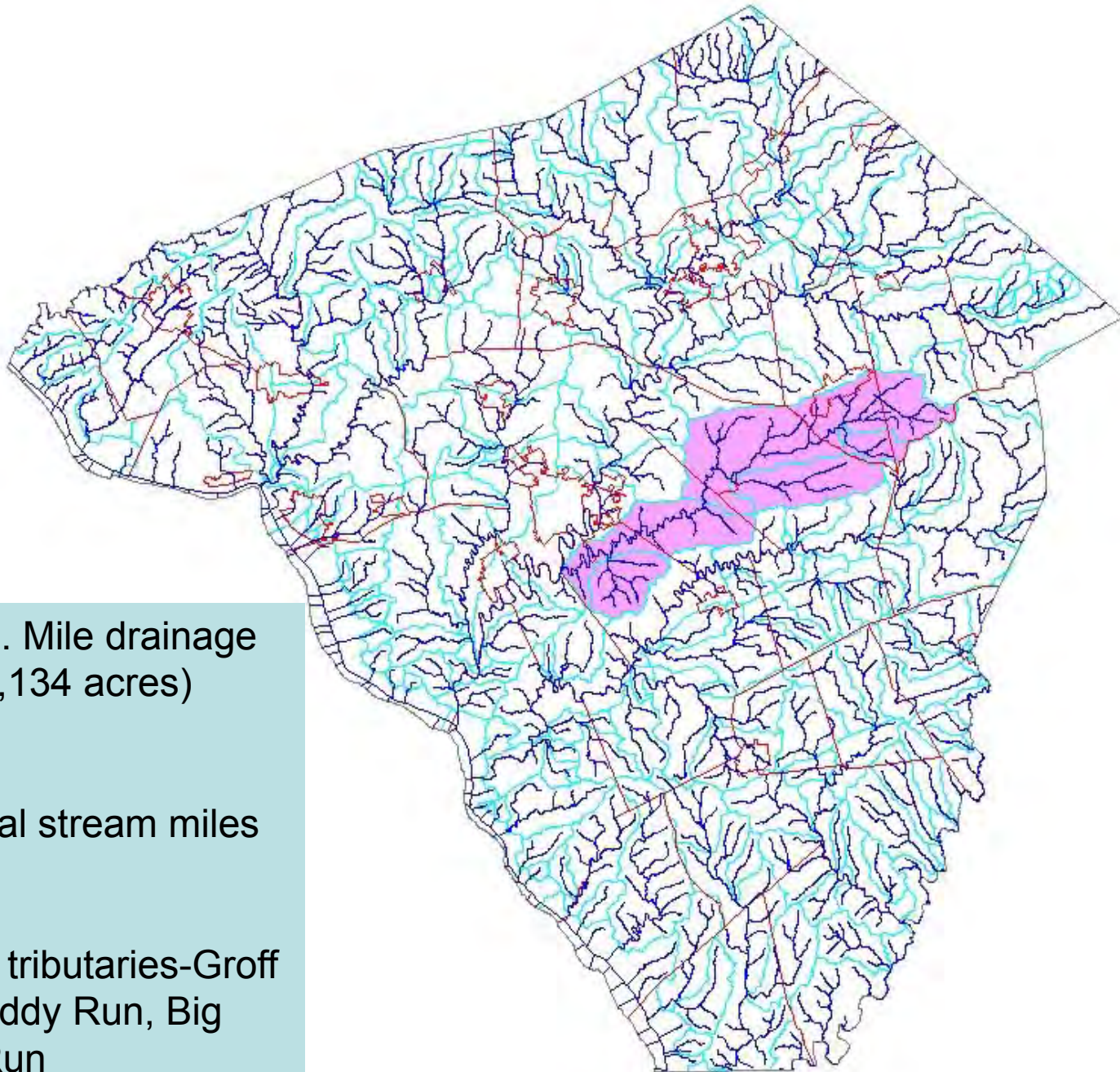






April 26, 2004





*56.5 Sq. Mile drainage area (36,134 acres)

*76.8 total stream miles

*3 major tributaries-Groff Run, Muddy Run, Big Spring Run









FENCING FACTS

- Over 43,000 ft of stream bank fencing installed (over 8 miles!)
- Over 20 cattle crossing accesses created
- Over 600 trees planted to create riparian buffers





















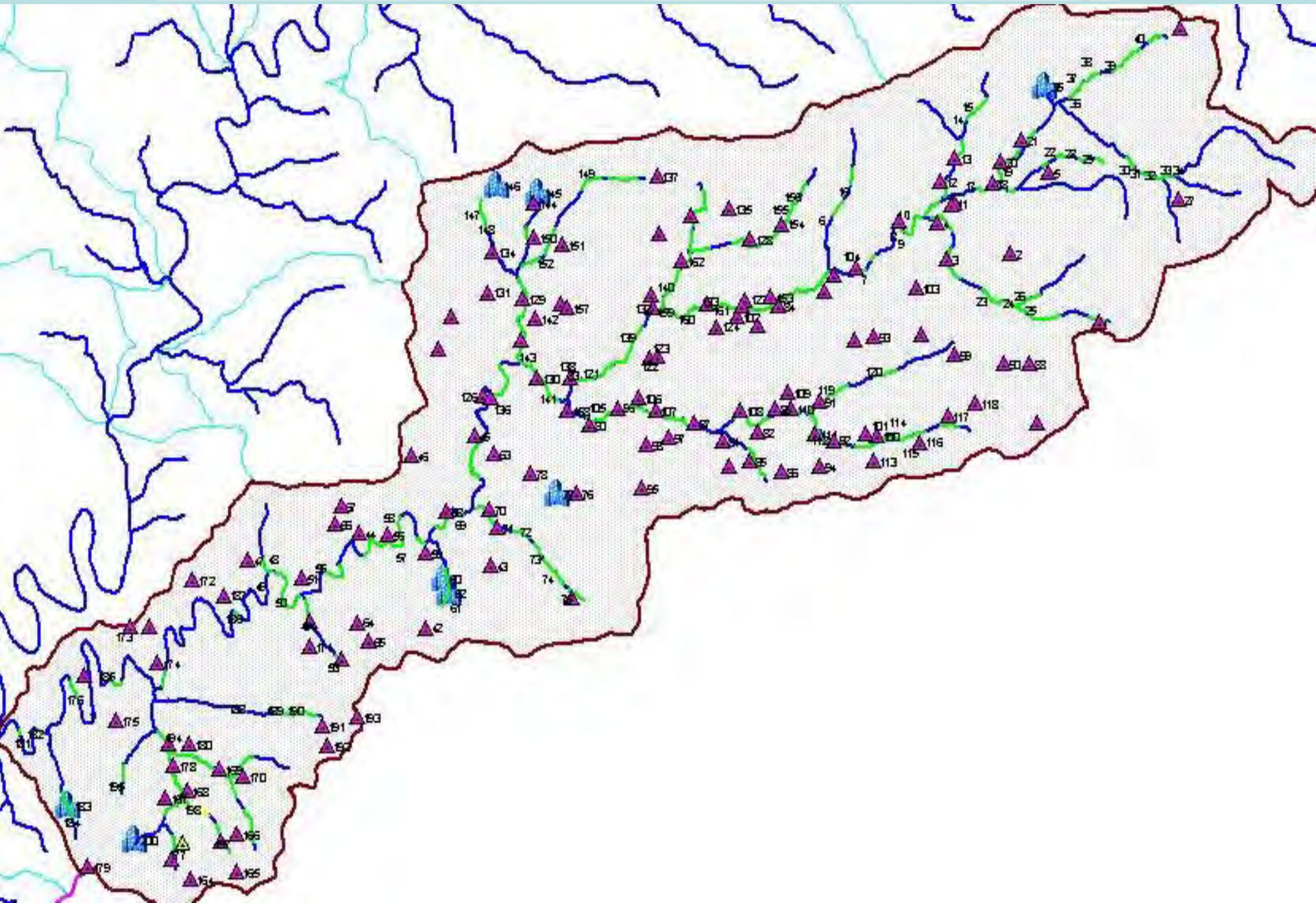








Mill Creek Assessment Map



Partners & Funders

- Natural Resource Conservation Service
- Isaac Walton League of America
- Lancaster County Conservation District
- U.S. Fish & Wildlife Service
- Paradise Sportsmen Association
- Ressler Mill Foundation
- Fish America Foundation
- National Fish & Wildlife Foundation
- PA Department of Environmental Protection Section 319 Program
- Wetland Habitat Incentive Program
- Cora Brooks Foundation



Millcreek Preservation Association
Lancaster County Conservation
District's Watershed Excellence Award

